

Open Space Workshop 22 Feb 2020

- Working Group: Natasha Atkins, Lauren Bailey, Jackie Bianchini, Mike Dowell, Carol Fuller, Brian Harner, Kari Klaus, Jane Siegel (all 3 civic associations)
- Workshop: Report: In final draft
- Open Space video: <https://youtu.be/5wT5Ju8FP8A>
- Four sub-topics:
 1. Connecting residents to the natural world and enhancing biodiversity throughout 22202 green spaces
 2. Re-envisioning Virginia Highlands Park as the backyard for the Pentagon City community
 3. Developing a holistic approach to planning Crystal City Parks
 4. Exploring the possibility for a publicly accessible greenway from Roaches Run Waterfowl Sanctuary along the railroad tracks to the southern end of Crystal City

Open Space Workshop 22 Feb 2020: Overview

- **Five “Pecha Kucha” presentations**
 - to bring a variety of perspectives to the open space discussion.
- **Nature photography of David Howell**
 - beautiful photographs of Arlington flora and fauna.
- **Walking tours and planning exercises**
 - to develop an understanding of open space opportunities in the neighborhood.
- **Participants presentations**
 - observations and ideas for each of the four topic areas.



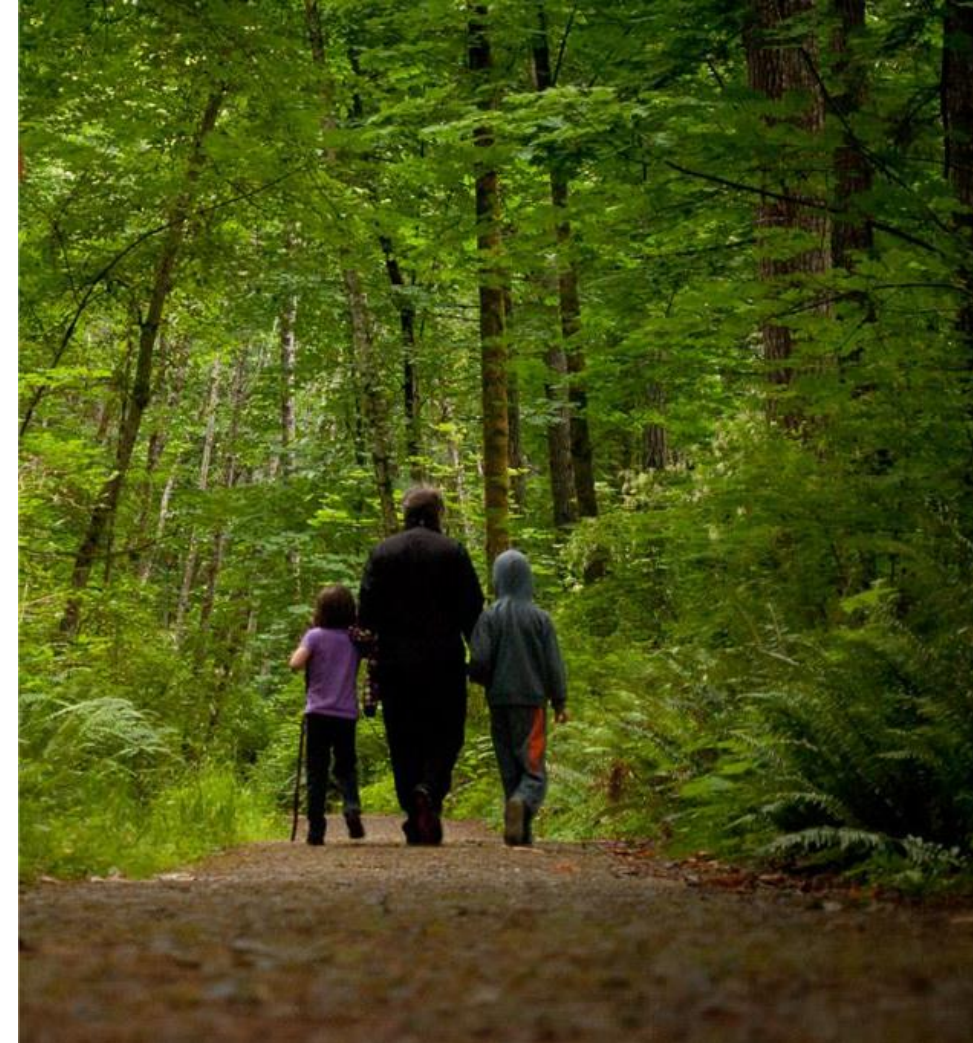
Open Space: Connecting Residents to Nature

- Biophilia = human connections with nature
- Arlington joined the worldwide Biophilic Cities Network
 - March 2020
 - committed to a vision of natureful urban communities
- Possible Next Steps:
 - Develop a professional Biophilic Greenway map from Arlington Ridge to Long Bridge Park (via VHP, Met Park, 15th and 12th Streets, Crystal Drive)
 - Consult with 3 CAs on recommendations
 - Engage with County, BID, and developers to create united pathways

Open Space: Connecting Residents to Nature

Workshop Discussion, Findings and Recommendations:

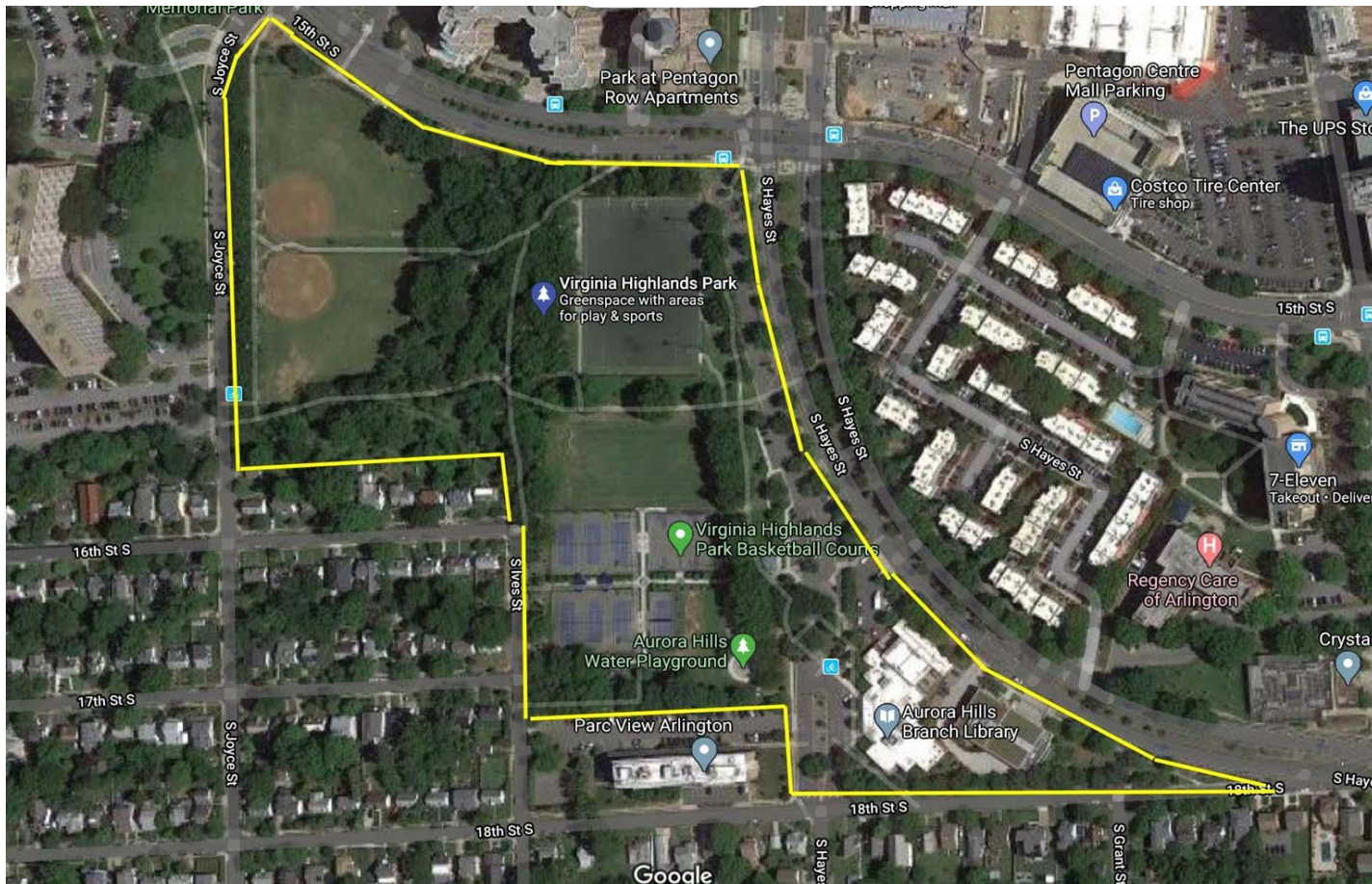
- Develop walking/biking loops
 - around the entire area, and within neighborhoods in 22202
- Connect PenPlace to Long Bridge Park
- Connect Crystal City to the natural areas
 - on the east side of the railroad
- Identify goals for natural systems:
 - pollinators, tree cover/heat island reduction, storm water/drainage, solar access
- Add plantings
 - to provide seasonal color and interest year-round
- Connect various green spaces together
- Increase shade trees
- Improve hostile pedestrian environments



Open Space: Virginia Highlands Park (VHP)

“The traditional parks of the past do not serve the needs of the present or future.”

--- Trust for Public Land in its 2017 *Field guide for Placemaking in Public Parks*,



Virginia Highlands Park overview

- One of the largest public parks in Arlington (18 acres)
- A traditional park that has underutilized and waste space;
- Long-standing local (AHCA) efforts to improve VHP
- County VHP Master Planning on hold (removed from FY21 CIP)
- Working group brainstormed programming and project recommendations in interim

Open Space: Virginia Highlands Park

- **Ideas matrix of proposed ideas,**
 - timelines, priorities; Phase I and II (in draft)
- **Naming map of potential utilization areas and amenities**
- **Temporary programming possibilities**
 - Expansion of multi-use in the softball fields to support social-distance friendly programming; e.g., music, popup art, movies
 - Support by the BID for programming events: e.g., the BID supported July 4 with painting of social distancing circles and gift certificates to restaurants.



Events

Weekly music and picnic in the park
July 4th special event
Social distancing and safety



Specific Projects Considered

- An urban agriculture demonstration garden in collaboration with Friends Of Urban Agriculture (Highlands Urban Garden or HUG)
- Improvements to the SW corner of Hayes and 15th St to create a welcoming gateway to the park and for temporary events
- A power source for events, possibly with a festival tent and overhead lights
- Signage and wayfinding
- Movable chairs, benches, and tables
- Temporary dog park (aka “The Dog House”)
 - *Already in progress through Pentagon City Dogs.*



The Arlington County Crystal City Sector Plan, adopted in September 2010, identified 26 urban parks, all private.

Five Crystal City parks discussed in the workshop

[to be considered with upcoming site plan applications for potential transfer of ownership from JBG Smith to the County]

1. Center Park

- (1900 Crystal Drive/S Bell Street) - 74,200 sf/1.7 acres

2. Gateway Park

- (12th and Crystal Drive) - 54,500 sf/1.25 acres

3. Metro Market Square

- 18th Street ,43,900 sf/1.0 acre

4. Crystal Park

- (2525 Crystal Drive) - 38,000 sf/0.87 acres

5. 23rd Street Plaza

- 15,000 sf/0.34 acres

OPEN SPACE FRAMEWORK PLAN



JBG Smith Proffered Parks

- 1 Crystal Park
- 2 Center Park
- 3 23rd Street Plaza
- 4 Metro Market Square
- 5 Gateway Park

JBG Smith Parks

- 6 Water Park
- 7 Friends Plaza
- 8 The Common

Aspirational Parks / By Others

- 9 Pocket Park #8
- 10 Garden Park
- 11 North Gateway Park
- 12 Mets Park
- 13 Pen Place
- 14 Greenway Park
- 15 Long Bridge Park

Open Space: Crystal City Parks (Walking Tour)

Outcomes of group's discussion and walking tour:

- Metro Entrance Plaza
 - Could be made more attractive with a wall mural, trees, and plants.
- Dog Park
 - A temporary dog park above the Metro Entrance Plaza down the slope where the vehicle ramp to Route 1 has been removed.
- 15th Street Garden Park
 - (33,500 sf/0.77 acres)
 - under consideration by the County for redevelopment on north side of street
- Parks feel isolated and unconnected;
 - important goals are to link pedestrian circulation between the parks and create a sense that the parks form an overall network of open spaces in Crystal City



Open Space: Crystal City Parks



- 3 community engagement meetings
 - (July 8 and 22, September)
 - BID and JBG Smith sponsorship
- Hoerr Schaudt Landscape Architects helping to design options and seek community ideas
- Livability22202 Open Space Workshop ideas correspond; building partnership
- <https://www.crystalcityparks.com/>

Open Space: Roaches Run

- Roaches Run Waterfowl Sanctuary and adjacent wooded area form a long linear contiguous natural space
 - Multiple custodians and owners: CSX, JBG Smith and National Park Service
- Recommendation: Develop a greenway between the GW Memorial Parkway and the railroad tracks from the south end of Crystal City to Roaches Run
 - Walking trail loop with multiple access points from Crystal City
 - Integrated into an overall system of pedestrian greenways in 22202
 - An extension of a 2012 NPS plan for Roaches Run
 - Multiple custodians and owners: CSX, JBG Smith and National Park Service



Open Space: Roaches Run

- **Status**

- JBG Roaches Run offer tied to 2525 Crystal Drive Site Plan
 - *On hold pending outcome of building height study*

- **Possible Next Steps**

- Community clean up day next March or April (Annual Potomac River Clean-Up)
- Community outreach to determine the balance between community access and support for eco-system
- Engage Arlington County, Commissions, Property Owners to bring their technical expertise to the development of this open space

- **Other activities to consider are:**

- Seeding wild rice for birds may be supportive of the migrating and overwintering birds
- A survey of the flora and fauna
- An invasive species removal activity

Open Space: Connecting Residents to Nature

